

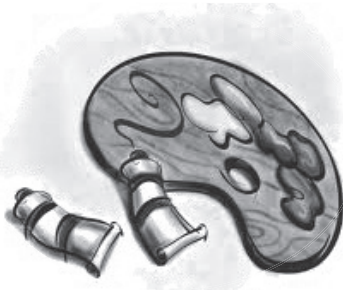
# Art - Fine

## FINE ART DIVISION CODE 01

Art - Fine

### Fine Art Codes

- ① Amateur
- ② Experienced
- ③ Professional



### Fine Art Classes; (2 Dimensional Art)

**Oil, Acrylic, Watercolor, Pen & Ink,  
Oil-Acrylic, Pastel, Pencil or Charcoal**

- 01 Portrait
- 02 Landscape
- 03 Still Life
- 04 Animal
- 05 Building
- 06 Western
- 07 Abstract
- 08 Other
- 09 Theme

### Special Awards

**Fine Art, In Memory**  
Of Jerry Stanford  
\$100.00  
Ron Stanford Picks

**Best of Show, Professional**  
\$35.00 Premium  
Four County Art Guild

**Best of Show, Experienced**  
\$25.00  
Cambridge Litho

**Best of Show, Amateur**  
\$25.00  
Middle Valley Construction

**Best Theme, Adult**  
\$10.00 Each  
Monte Eppich DDS  
Mountains West Dental

**Superintendent's Pick Adult**  
\$25.00 Premium  
Four County Art Guild

**Superintendent's Pick Youth**  
\$10.00 Premium  
Four County Art Guild

### General Rules for Art: Fine and Youth

- ◆ General Rules/Regulations will be followed
- ◆ Entries will be received on Tuesday from 1pm to 8pm.
- ◆ Judging will be Wednesday 9am to 5:30pm.
- ◆ Enter Codes 01 (Fine) or 02 (Youth) on your entry sheet.
- ◆ No wet paint will be accepted.
- ◆ No work from commercial kits will be accepted.
- ◆ Framed art work must be equipped to hang.
- ◆ Management is not responsible for pin holes in exhibits not prepared for display.
- ◆ In Fine Art there will be no limit in any given class, within reason; superintendent's discretion.
- ◆ In Youth Art, only one exhibit may be entered per class with a maximum of ten entries per exhibitor.
- ◆ No more than one (1) ribbon will be awarded to an exhibitor in each class.
- ◆ Art must be exhibitors' own work, and completed within the last two years.
- ◆ Outstanding Art will be considered for Special Merit ribbons.
- ◆ Superintendent/Judge has final say if entry appears to be Fine Art rather than Craftsmanship.